

precisely

Thank You For Joining!

The session will begin at 11:00am ET



precisely

Trillium User Group (TUG)

April 16th, 2025



Quick Orientation: On24 Platform

The screenshot displays the On24 platform interface. On the left, a large white rectangular area contains a red error icon and the text "Content not available or is still being processed". Below this, there are two smaller white rectangular areas, each with a placeholder image. At the bottom left, there is a chat input field with a smiley face icon, the text "Send a message", and a send button. To the right of the chat input, there is a question input field with the text "Enter your question" and a "Submit" button. On the right side of the interface, a purple banner features the "precisely" logo, a pink heart outline, and a smiling woman with dark hair wearing a pink blazer and holding a laptop. The banner text reads "Thank You For Joining!" and "The session will begin at 11:00am ET". Below the banner, a white box contains the text "Trillium User Group Resource Page" and "Precisely Knowledge Communities- Trillium". At the bottom of the interface, there is a dark purple bar with several icons: a play button, a person icon, two thumbs up, a list icon, a smiley face, and a speech bubble. In the bottom right corner, there is a logo that says "POWERED BY ON24".

precisely

Content not available or is still being processed

precisely

Thank You For Joining!

The session will begin at 11:00am ET

Trillium User Group Resource Page

Precisely Knowledge Communities- Trillium

Send a message

Enter your question

Submit

POWERED BY ON24

Agenda

1

**Trillium Support
Overview**

***Matt Malczewski &
Matt Kennedy,
Precisely***

2

**Considerations For
Undertaking A
Successful Trillium
Upgrade**

Dennis Sam, Precisely

3

Trillium Tips & Tricks

***Mike Sisolak,
Precisely***

4

**Announcements &
Updates**

***Matt Malczewski,
Precisely***



Overview of Trillium Support Options

April 16, 2025

Matt Malczewski | Customer Programs Manager, Precisely

Matthew Kennedy | Senior Customer Support Operations Engineer,
Precisely



Trillium User Group Asset Archive



Trillium User Group

Precisely user groups provide an excellent opportunity to share knowledge and learn more about Precisely's solutions from colleagues, peers, and internal experts. Whether a long-time Trillium professional willing to share your experiences or a new user who'd like to grow your knowledge, this user group is an excellent way to help you get the most value from your technology investment.

Through presentations, demonstrations, and networking, you can grow your professional network. You will:

- Receive an immediate response to your questions
- Be inspired to address challenges
- Network with fellow Professionals
- Learn about the latest Trillium updates

Coming soon, you will find a

Presentation Slides Archive

December 4, 2024: Trillium User Group Slides



Trillium User Group December 4, 2024

Jeff Brown at Precisely- 'Trillium Roadmap'

Michael Sisolak at Precisely- 'Trillium Usage Tips'

December 2024 Meeting

The launch meeting for the Trillium User Group featured a roadmap for planned changes to the solution and optimization tips for getting the most out of your environment.

[Watch here](#)

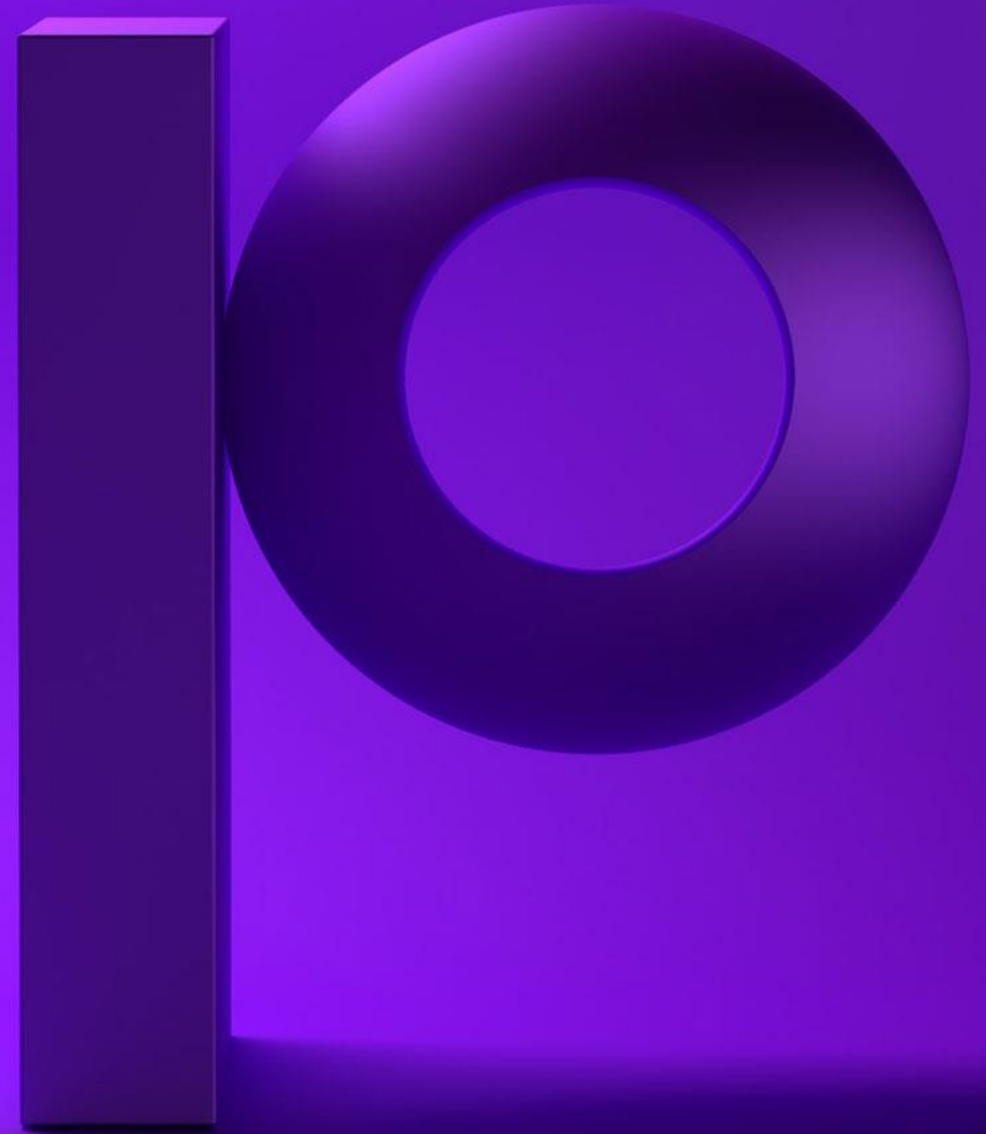




Considerations for a Successful Trillium Migration

April 16, 2025

Dennis Sam | Principal Technical Consultant, Precisely



Topics

- Why Migrate
- Migration Paths
- Considerations

Why Migrate

Supported Versions

- Series 7: 7.15 and later
- TSQ: 16.0 and later
- Windows, RHEL 8/9 and SuSE Linux 15.x+

Performance

- 64-bit architecture

Enhancements

- Cross-platform Conversion
- Updated Driver Support
- Repository Encryption
- Token-based Authentication
- CyberArk Integration
- Replaced Xinetd with Systemd

Migration Paths



Migration Paths

Series 7

- o Process flows must be recreated
- o Migration utilities can assist with some rule conversions
- o Data Reconstructor logic must be translated to Transformer rules

Migration Paths

Pre 15.7.4

- o Previous versions can directly migrate to 15.7.4 but only 15.7.4 has migration to 17.x
- o Install Repository Server only, pointing to old repository (preferably backup)
- o Install 17.x, pointing to 15.7.4 repository

15.7.4 and Later

- o Direct migration to current version

Migration Paths

TS Quality Only - Export/Import Projects

Benefits

- Only move what is required
- Can be faster

Drawbacks

- Need to recreate objects
- Repositories
- Users
- Loader connections
- Entities

Considerations

- Current vs Legacy Projects
- Parser Customization
- ODBC Connections
- Online Help and Release Notes - <https://help.precisely.com/>
- Services for Series 7

Online Help

Repository migration support with encryption

help.precisely.com/r/t/1021078525/2024-10-16/Trillium-Quality-and-Discovery/trill-dq/Latest/en-US/Trillium-DQ-Release-Notes/Repository-migration-support-with-encryption

Never miss an update! Subscribe now to receive personalized alerts when content changes - [Learn more!](#)

precisely Help Center

Search across all content

Sign In English

Filters

Trillium DQ Release Notes > Release notes 17.3 > What's new > Improved security with LDAPS support on Linux and Windows

Latest

Table of contents

15 Related links

Search in document

Search documentation

Trillium DQ Release Notes Overview

Release notes 17.3

What's new

- Guideline for fresh installations and migrations
- Improved security with LDAPS support on Linux and Windows
- Repository migration support with encryption**
- Cross-platform repository migration support with encryption
- Seamlessly copy data source metadata using Discovery Center
- New grids added on the

Copyright 2008, 2024 Precisely
Trillium DQ Release Notes

[Terms of Use](#) | [Legal](#) | [Privacy Notices](#) | [Trademark](#) | [Your Privacy Choices](#) | [California Privacy Notices](#) | [Cookie Settings](#)

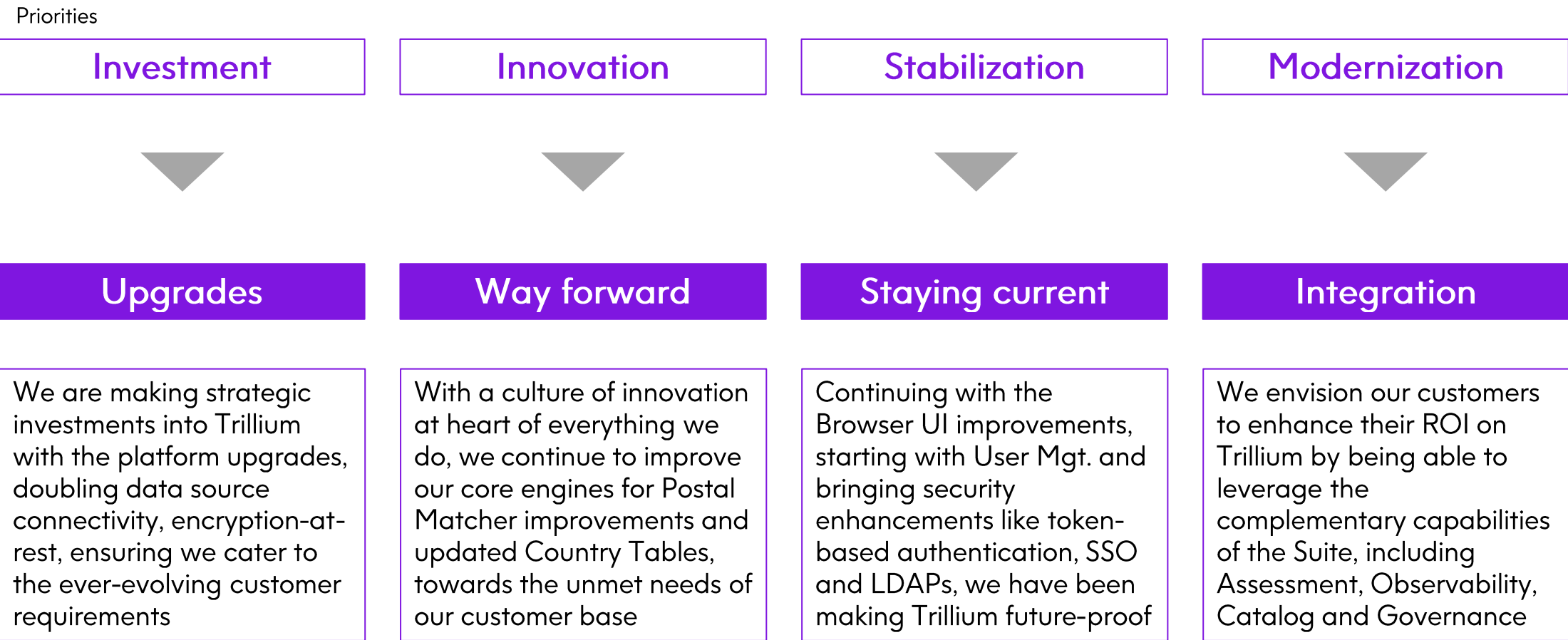
Linux

Version	Migration Support	Migration Support with Encryption
Linux RH 7	Version 17.3 is not supported on RH7. It can only be supported by using the cross-platform migration method to migrate from versions 15.7.4, 15.8.2, 16.1, 17.0.0, 17.0.1, 17.1, and 17.2 to version 17.3.	Version 17.3 is not supported on RH7. It can only be supported by using the cross-platform migration method.
Linux RH 8	Migrate existing repositories from version 17.0.1, 17.1, or 17.2 to 17.3	<ul style="list-style-type: none">Migrating existing non-encrypted repositories to an encrypted repository is supported from versions 17.0.1, 17.1, and 17.2 to version 17.3.Migrating existing encrypted repositories to encrypted repository is supported from version 17.2 to 17.3.Migrating existing encrypted repositories to non-encrypted repository is not supported.
Linux RH 9	Migrate existing repositories from version 17.2 to 17.3	<ul style="list-style-type: none">Migrating existing non-encrypted repositories to an encrypted repository is supported from versions 17.2 to 17.3.Migrating existing encrypted repositories to another encrypted



2025 Trillium Priorities/Themes

We are continuing to invest in Trillium prioritizing across multiple themes and underlying upgrades that result in key features and security enhancements, while ensuring that it reaches our customers seamlessly through the User Experience improvements being brought in



The background features a collection of 3D geometric shapes in various shades of purple. In the top left, there is a horizontal rectangular prism and a sphere. In the top right, a sphere is positioned above a vertical rectangular prism. In the center, a small vertical rectangular prism is next to a sphere. In the bottom left, a sphere is next to a square. In the bottom right, a tall vertical rectangular prism stands. All shapes have soft shadows, giving them a three-dimensional appearance.

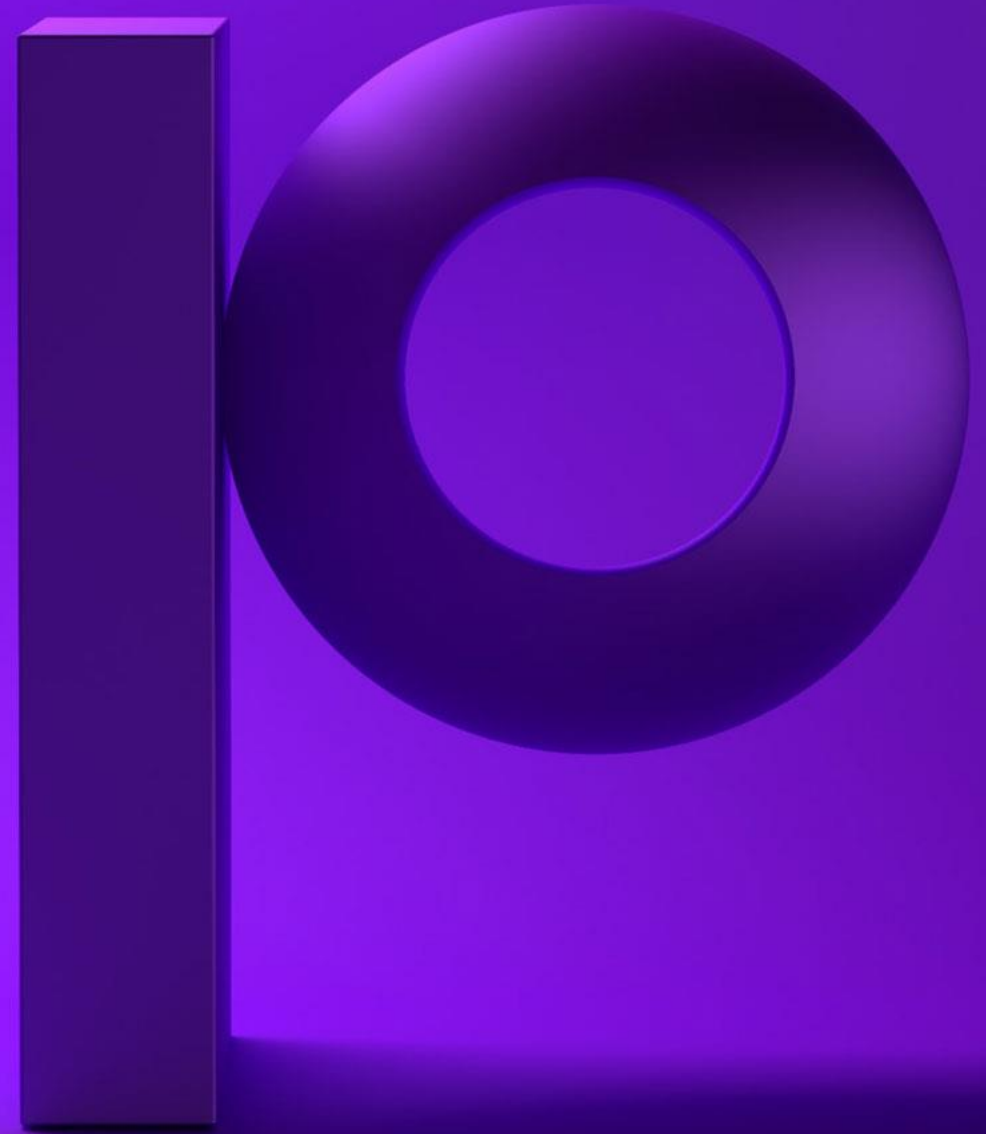
Thank you



Trillium Tips & Tricks

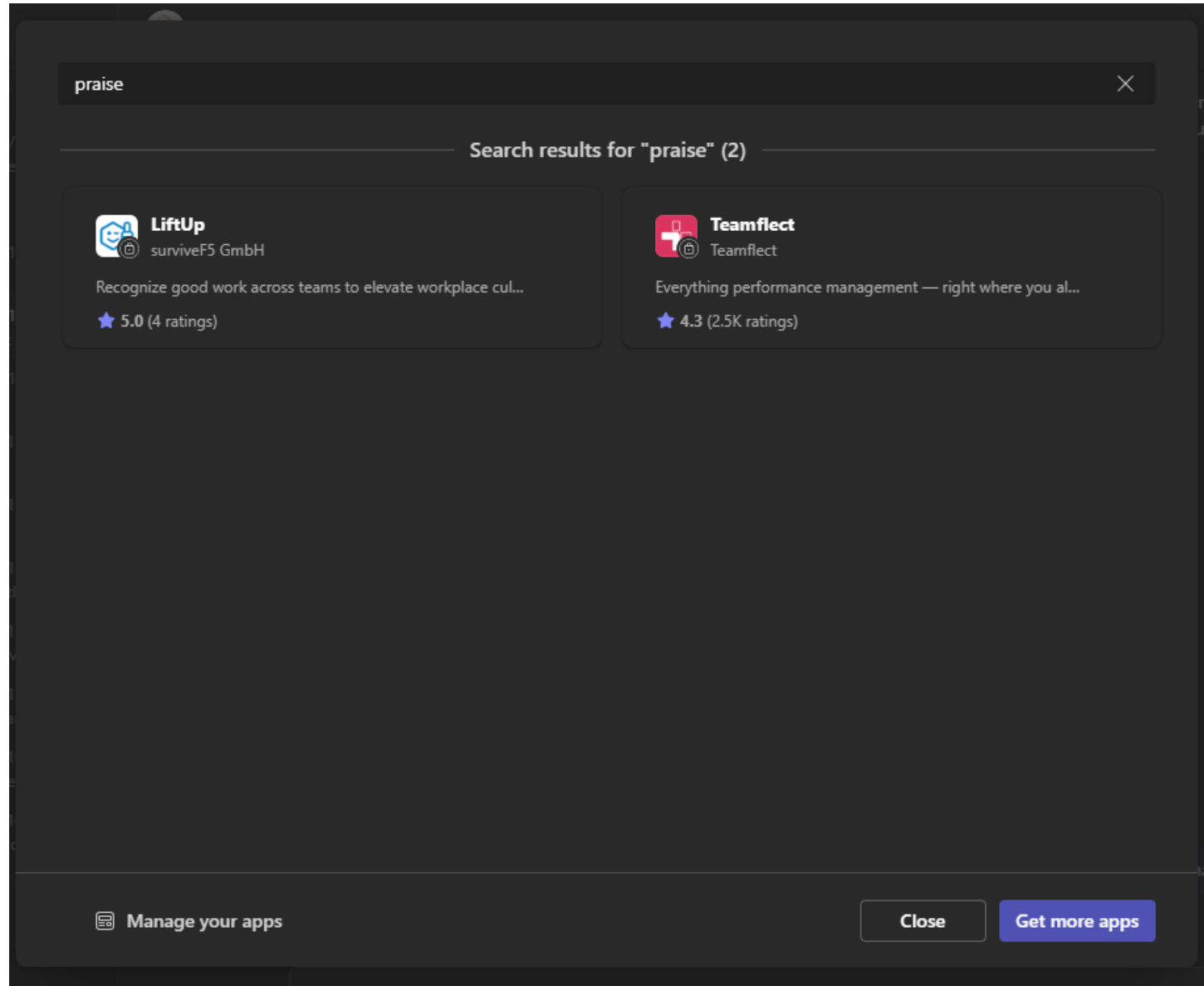
April 16, 2025

Mike Sisolak | Principal Sales Engineer, Precisely



Did you know...

...plugins can be helpful.



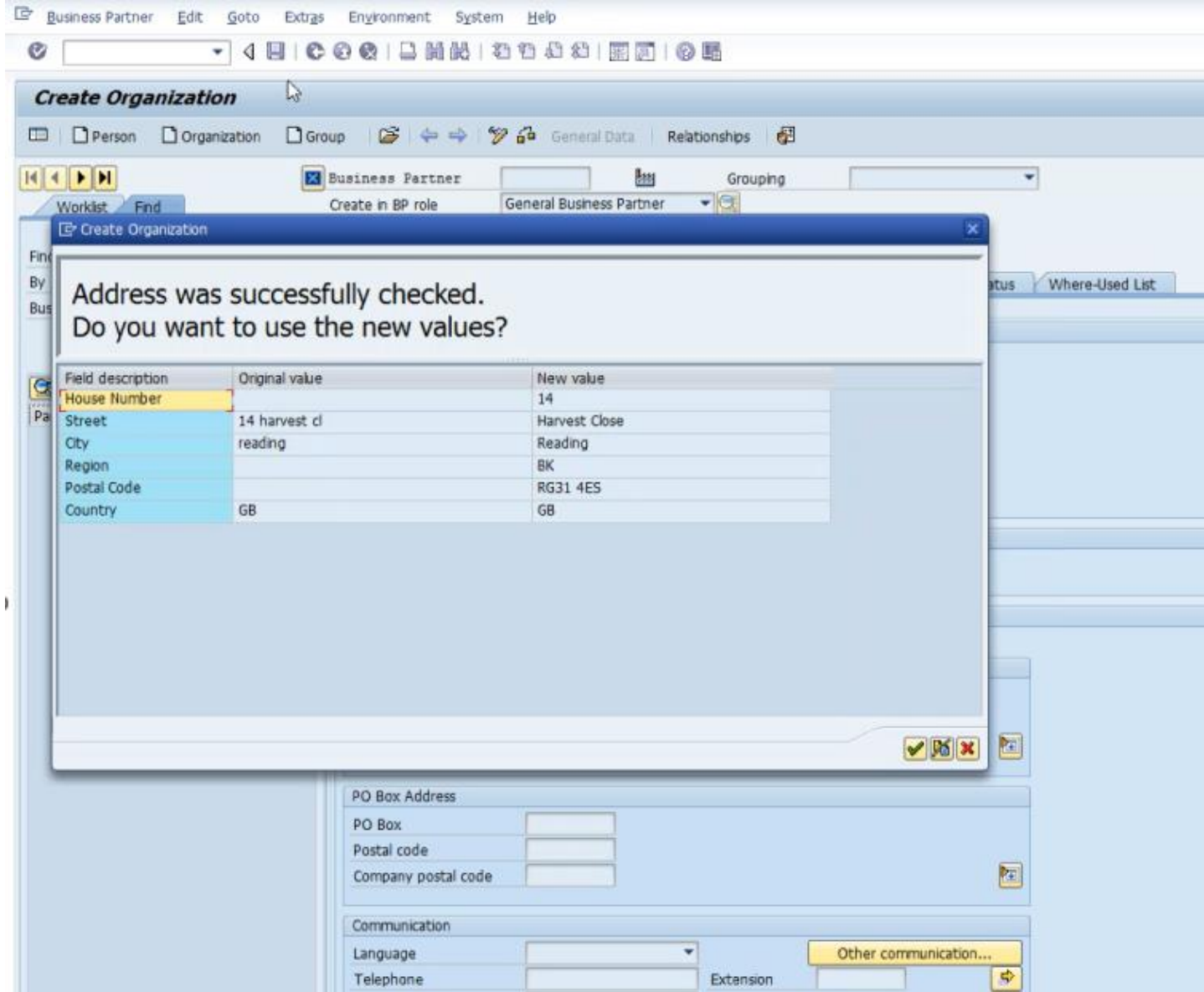
For example: Microsoft Teams offers plugins for many situations...

Did you know...

Trillium offers an SAP Plugin?

Trillium functionality is the same as for other applications, but users are:

- Shielded from Trillium visibility
- Allows for easy adaptation with very little coding



Did you also know...



Not everything works both ways...

Communication is not a one way street. It goes both ways.



som_{ee}cards
user card

But some things do.

Did you also know... you can call Trillium as a web service...

SOAP or REST

Real-Time Project Deployment Manager (64-bit) - v17.1.0 - Project Name: Customer_Master_US_Only

File Edit Help

Available preconfigured hosts - select to add to this project

Select the row of a specific deployment target host and configure it below

Mark	Deployable	Target Host Name	Last Deployed	Target Project Directory	Software (bin) Directory
<input type="checkbox"/>	No	Win8x64VM	never		

Configure the host selected above by specifying the directories listed below

Target Host Name: Win8x64VM

Target Project Directory:

Quality Software (bin) Directory:

Default Server Tables Base Directory:

Postal Tables Base Directory (Optional):

Pre-deployment and Deployment Related Errors and Messages

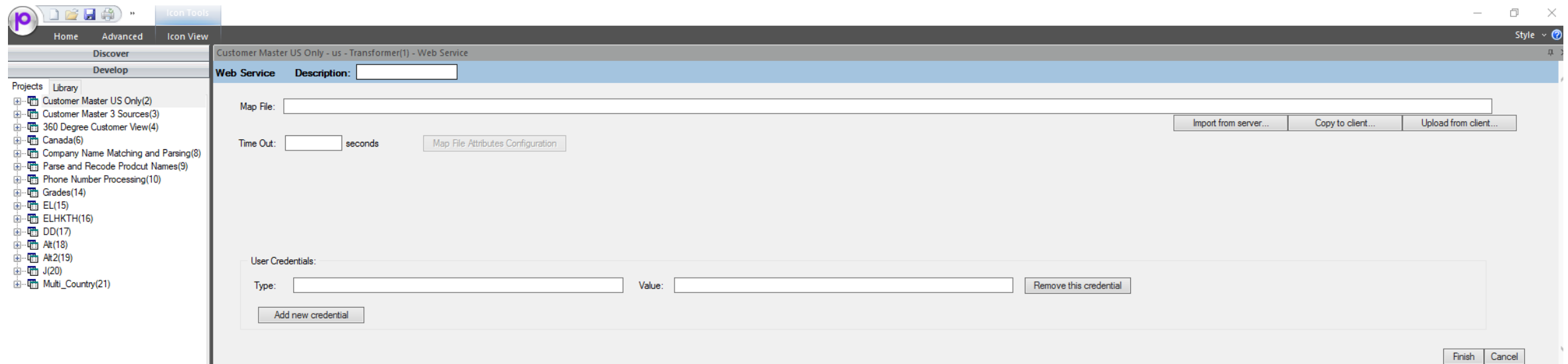
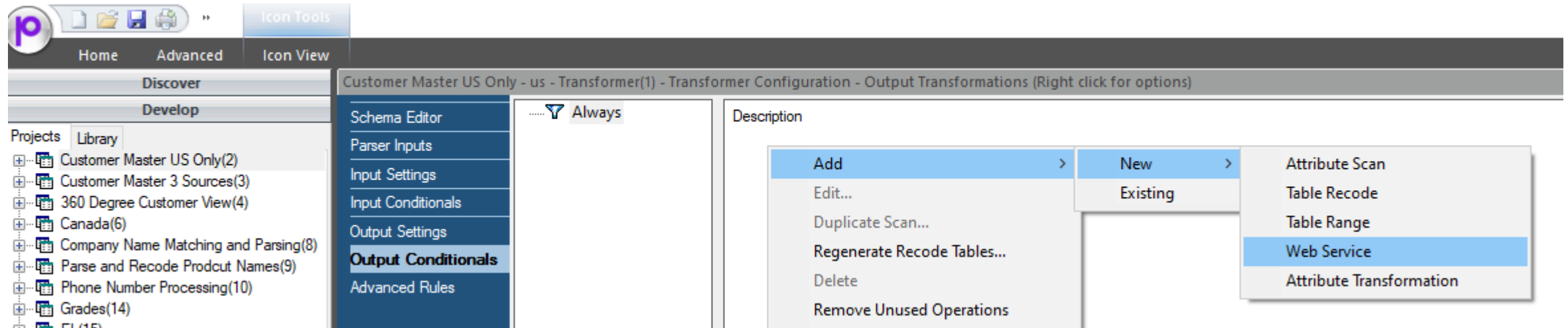
Check for errors

Copy messages to clipboard

☐ Override failed login, the host(s) that failed will be manually deployed.

1. Setup Hosts and Security 2. Edit and Generate Project 3. Deploy Marked Targets

Did you also know... you can also call a web service from Trillium...



The background features a collection of 3D geometric shapes in various shades of purple. In the top left, there is a horizontal rectangular prism and a sphere. In the top right, a sphere is positioned above a vertical rectangular prism. In the center, a small vertical rectangular prism is next to a sphere. In the bottom left, a sphere is next to a square. In the bottom right, a tall vertical rectangular prism stands. All shapes have soft shadows, giving them a three-dimensional appearance.

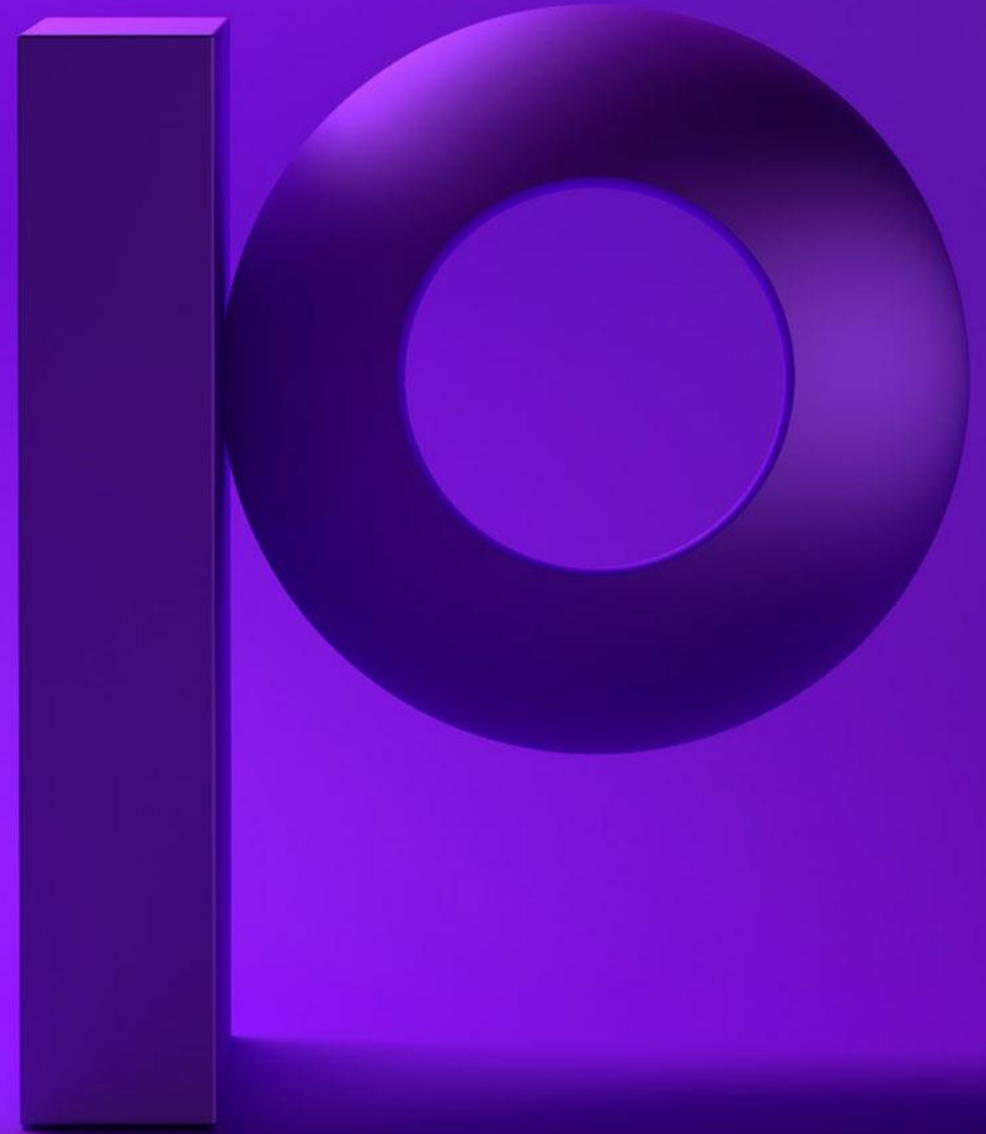
Thank you



Announcements & Updates

April 16, 2025

Matt Malczewski | Customer Programs Manager, Precisely

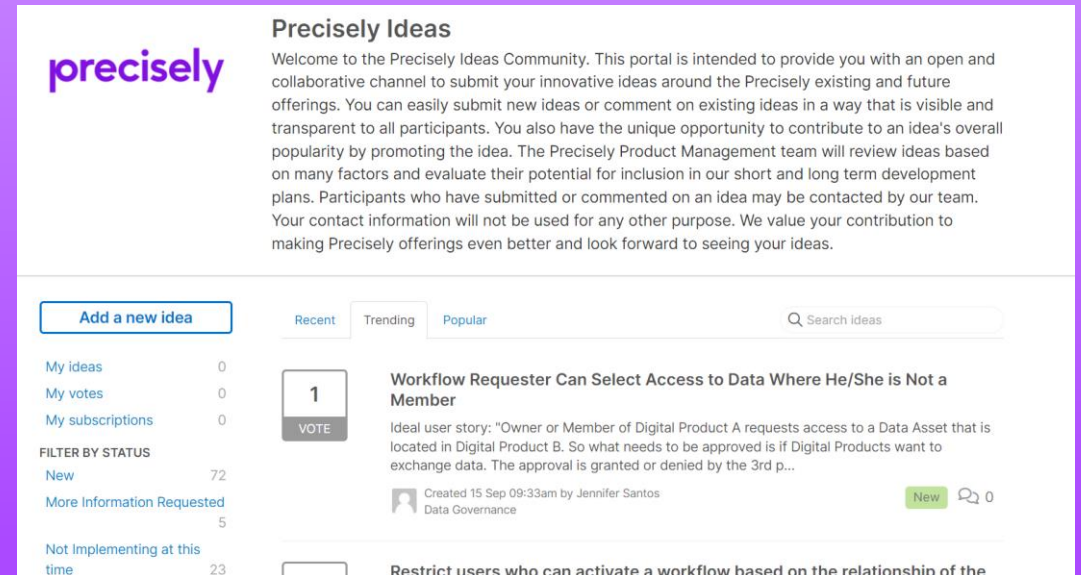


Hearing from YOU

- Part of a panel on a topic you are familiar with
- Talk about your unique use case in a structured Q&A with a Precisely team member
- Relate a story about solving a problem (specific views, rules, implementation, adoption, working with business teams, proving value, etc.)
- Full presentation that you've given internally or externally

Precisely Ideas

<https://ideas.precisely.com/?project=DQ>



The screenshot shows the 'Precisely Ideas' community portal. At the top, the 'precisely' logo is on the left, and a welcome message is on the right. Below the logo is a sidebar with links: 'Add a new idea', 'My ideas' (0), 'My votes' (0), 'My subscriptions' (0), and a 'FILTER BY STATUS' section with 'New' (72), 'More Information Requested' (5), and 'Not Implementing at this time' (23). The main content area has tabs for 'Recent', 'Trending', and 'Popular', and a search bar. The first idea listed is 'Workflow Requester Can Select Access to Data Where He/She is Not a Member' by Jennifer Santos, created on Sep 15. It has 1 vote and 0 comments. A second idea, 'Restrict users who can activate a workflow based on the relationship of the', is partially visible below.

Precisely Ideas

Welcome to the Precisely Ideas Community. This portal is intended to provide you with an open and collaborative channel to submit your innovative ideas around the Precisely existing and future offerings. You can easily submit new ideas or comment on existing ideas in a way that is visible and transparent to all participants. You also have the unique opportunity to contribute to an idea's overall popularity by promoting the idea. The Precisely Product Management team will review ideas based on many factors and evaluate their potential for inclusion in our short and long term development plans. Participants who have submitted or commented on an idea may be contacted by our team. Your contact information will not be used for any other purpose. We value your contribution to making Precisely offerings even better and look forward to seeing your ideas.

precisely

Add a new idea

My ideas 0
My votes 0
My subscriptions 0

FILTER BY STATUS

New 72
More Information Requested 5
Not Implementing at this time 23

Recent Trending Popular

Search ideas

1
VOTE

Workflow Requester Can Select Access to Data Where He/She is Not a Member

Ideal user story: "Owner or Member of Digital Product A requests access to a Data Asset that is located in Digital Product B. So what needs to be approved is if Digital Products want to exchange data. The approval is granted or denied by the 3rd p..."

Created 15 Sep 09:33am by Jennifer Santos
Data Governance

New 0

Restrict users who can activate a workflow based on the relationship of the

Precisely Resource Center

[Precisely.com/Resource-center](https://precisely.com/Resource-center)

Precisely Sponsored Webinars & Events

- TDWI: Unlocking the Power of Trusted Data for AI, Analytics, and Business Growth (April 30)
- Dataversity: AI You can Trust: The Critical Role of Governance and Quality (May 6)
- Dataversity Demo Days: AI Governance is no different – Or is it? (June 18)

Next Trillium User Group:
Fall, 2025 (Date TBC)

PRECISELY IN THE NEWS

[Precisely Acquires DTS Software – goes back to mainframe roots](#)

[Precisely Launches Geo Addressing and Data Enrichment Innovations on Snowflake Marketplace](#)

[Precisely Expands Automate SAP Data API to Simplify Integration and Scale Enterprise Process Automation](#)

See you in London!



Gartner Data & Analytics Summit 2025

12 – 14 May 2025 | London, U.K.

This year's conference delivers actionable insights into how data, analytics and AI leaders can shape the future of data-driven strategies. Addressing topics such as AI advancements, governance, data architectures, leadership and more, this event will enable you to strike a balance between innovation and operational excellence to secure future value.

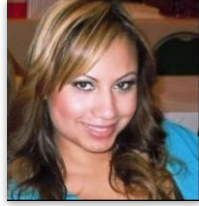
Data Governance Customer Success Team



Brenda
Stoetzer



Christina
Costello



DeeDee
Jimenez



Jennie
Richardson



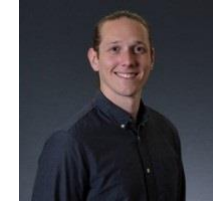
Liz
Dorner



Liz
Wright



Younes
Benhaddou



Ben
Hayhurst



Mitch
Williams



Stephen
Morganson



Shabana
Fazal



Susan
Foor



Patricia
Flores



Sarah
Smith



Afsane
Anand



Sherri
Chambers



Prescilla
Baldoz



Alex
McKenzie



Cali
David



Ghali
Mazzouri



Elle
Fuller



precisely

Customer Success



Thank You

Questions And More Information:

matt.malczewski@precisely.com

precisely